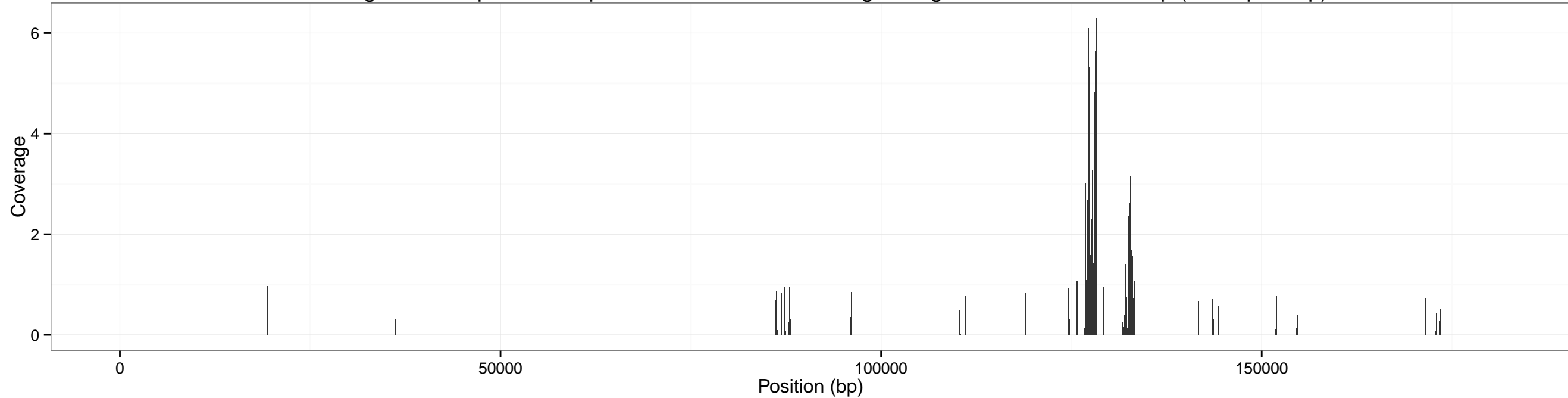
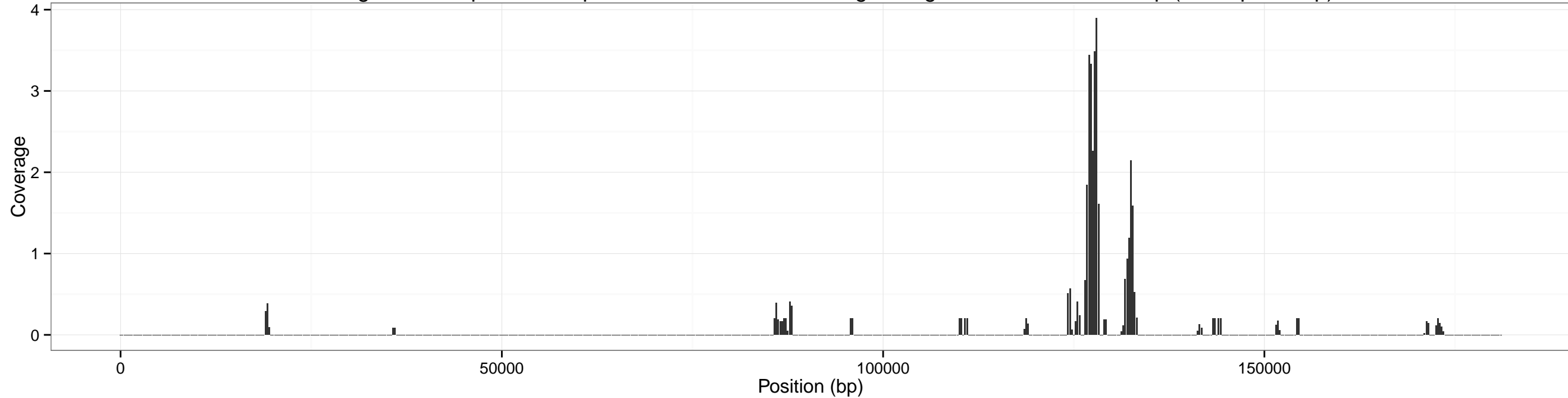


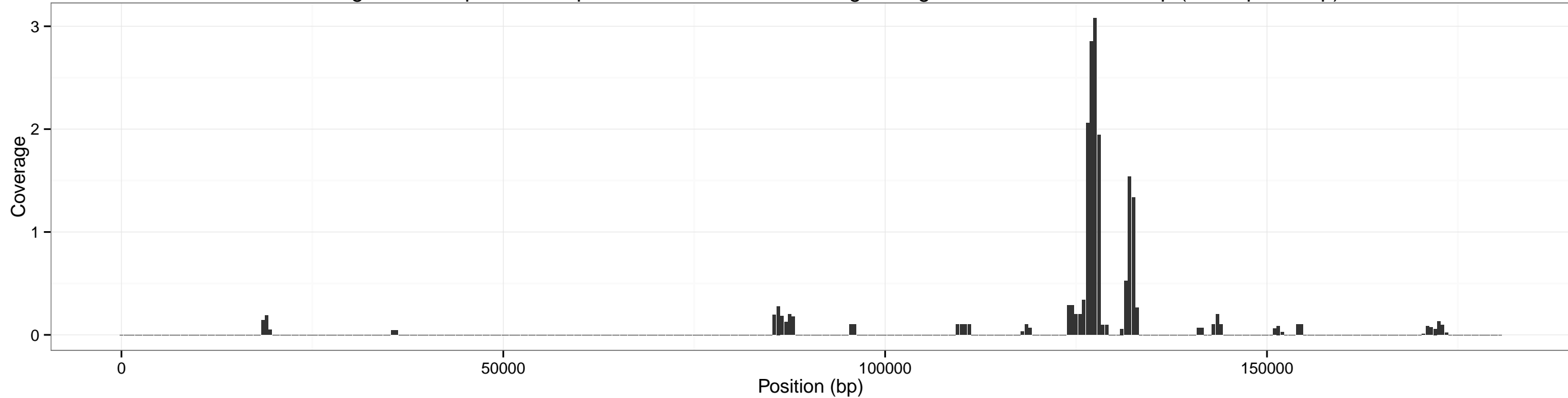
Coverage accross pXO1 for input SRR1749070-0.5x using sliding window of size: 100 bp (overlap 50 bp)



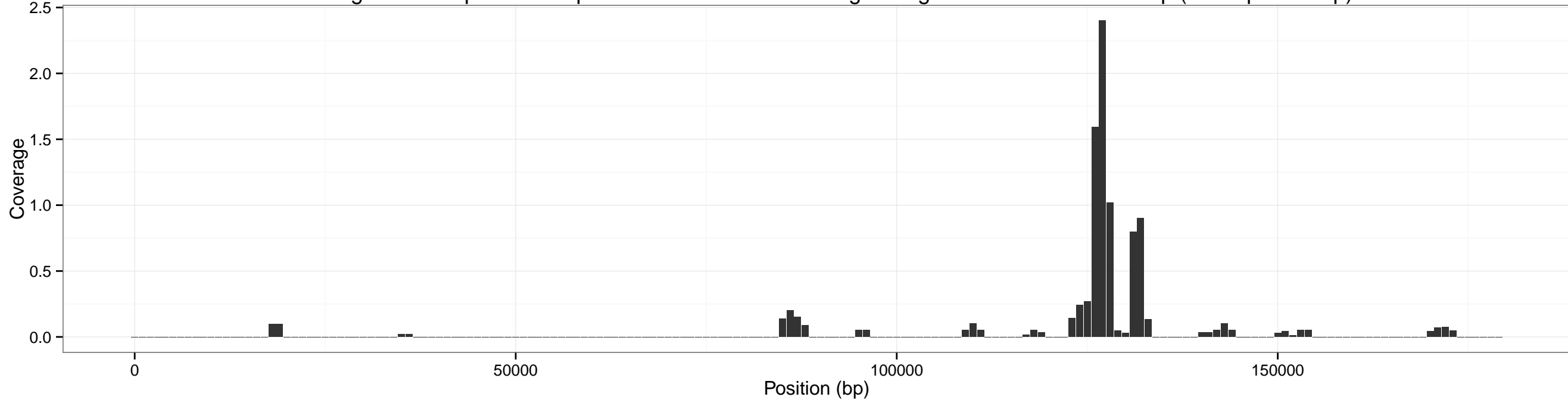
Coverage accross pXO1 for input SRR1749070-0.5x using sliding window of size: 500 bp (overlap 250 bp)



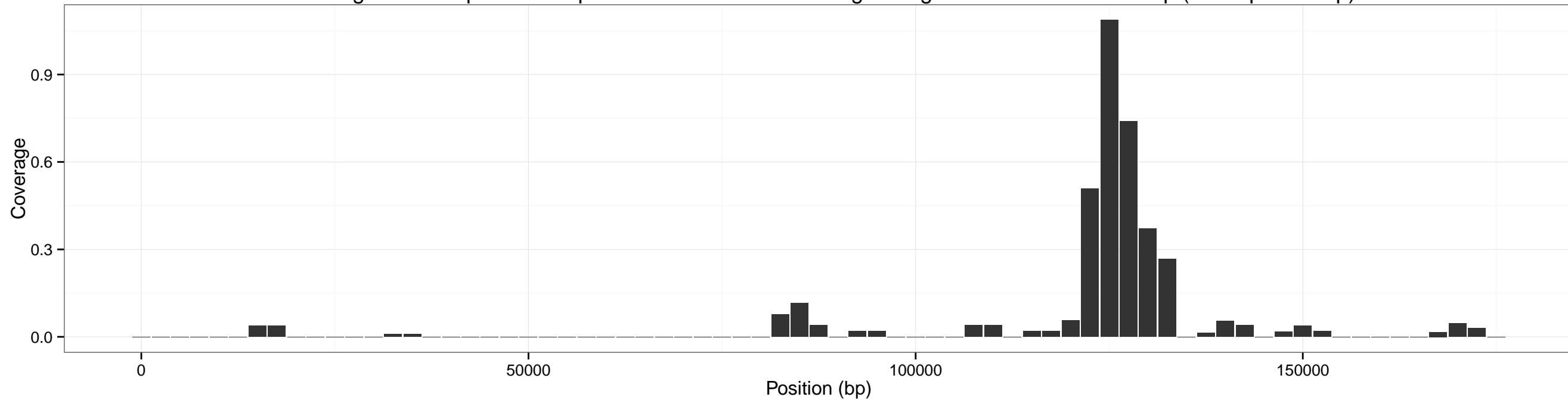
Coverage accross pXO1 for input SRR1749070-0.5x using sliding window of size: 1000 bp (overlap 500 bp)



Coverage accross pXO1 for input SRR1749070-0.5x using sliding window of size: 2000 bp (overlap 1000 bp)



Coverage accross pXO1 for input SRR1749070-0.5x using sliding window of size: 5000 bp (overlap 2500 bp)



Coverage accross pXO1 for input SRR1749070-0.5x using sliding window of size: 10000 bp (overlap 5000 bp)

